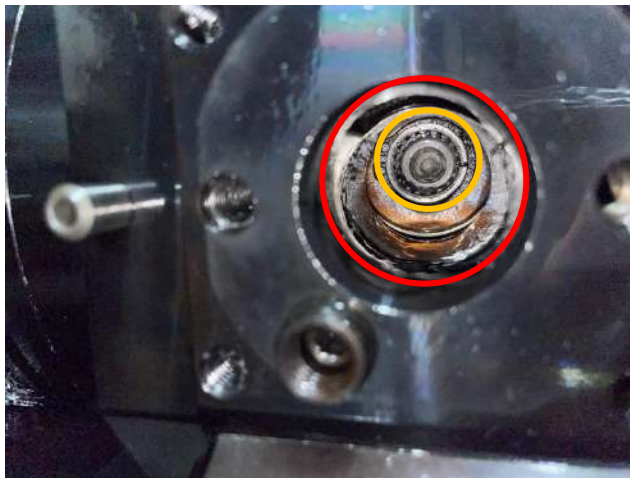


VDI 齒輪頭無法運轉

Gearhead cannot operate

1. 檢查耦合齒與刀盤是否撞車中心偏移

Check whether the centers of coupling and tool disc are off-position
because of crash.



2. 確認耦合齒 3 點鐘原點位置

Confirm coupling is at 3 o' clock origin position.



3. 檢查 S10 訊號耦合齒訊號切換是否正常

Check whether S10 coupling signal is normal.



4. 檢查刀塔端及動力刀座耦合齒是否受損，動力刀座安裝前是否有做定位確認

Check whether the couplings at turret side and live tool holder side are intact without damage. Positioning of live tool holder must be done before mounting to the tool disc.



5. 確認動力軸無刀時是否能正常運轉

Confirm whether the transmission shaft operates normally without any tool holders being mounted.

6. 動力機構進水生鏽卡死，內部軸承或齒輪損壞，關掉動力馬達電源，手動旋轉耦合齒確認有無卡死

Confirm whether any water ingress into the transmission mechanism and caused rusty and stuck, or whether the internal bearings or gear wheels are damaged. Switch off tool drive motor power and rotate the coupling manually to confirm whether it is stuck or not.

7. 動力皮帶式確認皮帶有無斷裂

Confirm the status of belt for belt drive motor.

