

S10 近接開關更換作業

S10 Proximity switch replacement

注意:請在刀塔鎖緊時做更換及耦合齒記號是否在 3 點鐘方向

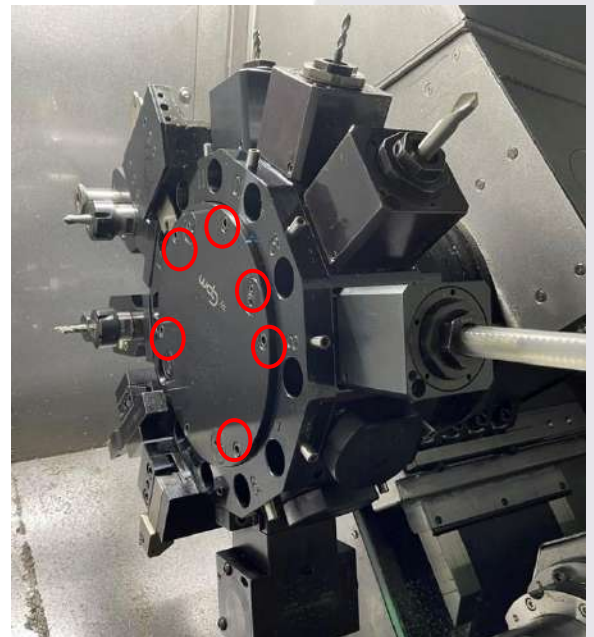
Attention : Only make the replacement when the turret is at clamped

status, and confirm the coupling is at 3 o'clock position.



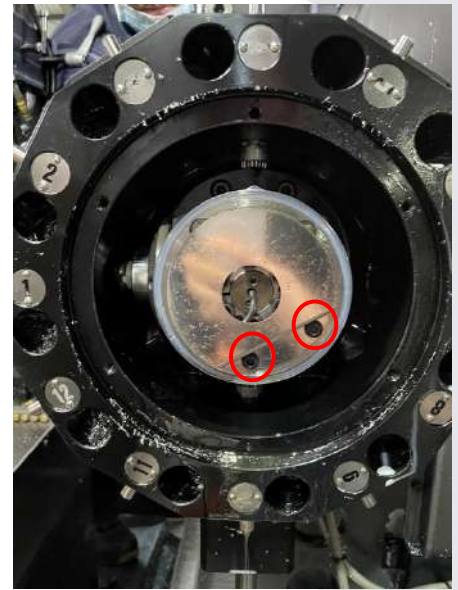
1. 拆解刀盤前蓋螺絲

Remove the screws located on the front cover
of the tool disc.



2. 移除螺絲及齒輪頭蓋板。

Remove screws and gearhead cover.



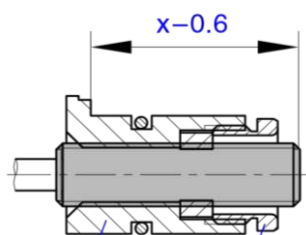
3. 移除 S10 壓塊, 並且小心拉出近接開關。

Remove S10 pressuring block and carefully pull out the proximity switch.



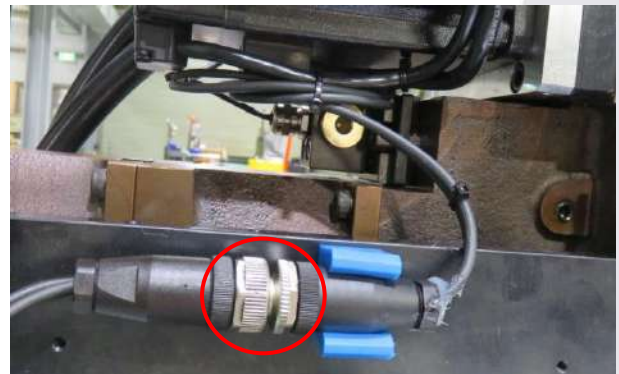
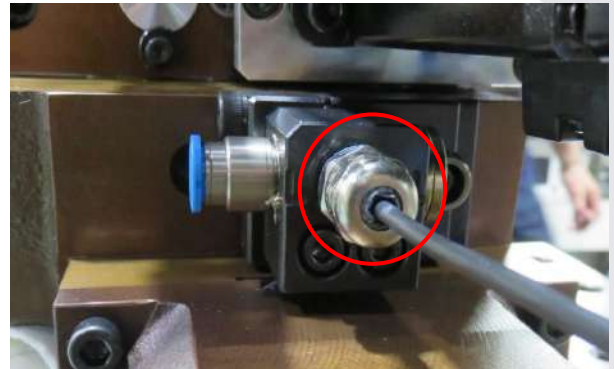
4. 取出後, 先量測近接開關的距離。

After taking it out, measure the distance of the proximity switch.



5. 放鬆刀塔後方線路迫緊及近接開關接頭
後, 即可從齒輪頭芯軸前端拉出。

After loosening the connector of the
proximity switch and cable behind the
turret, S10 may be pulled out from
gearhead shaft front.



軍規腳位圖：

Military diagram



S1/S8/S9/S10/S11 近接開關線路 (軍規接線/5PIN)			
NO	線色 Color	線路定義(號碼圖) Sensor	軍規接腳 Military PIN
1	黑 Black	S1	1
2	黑 Black	S8	2
3	黑 Black	S9,S10,S11	3
4	藍 Blue	OV	4
C	棕 Brown	24V	5

6. 新品照上述步驟復原

Follow the above procedures to install a new replacement.