



**TMTS**  
Mar. 25~28 / 2026

Redefine Tomorrow

Realize Potential

同心共進  
逆勢奔騰

Building Connections

Stronger Together

攤位號 Booth# 4F

**G0642**

Gpm  
The new Revolution  
霄特國際 X 特品國際

# ATC 高精 高速 方案

High accuracy solution

展機規格 Specs

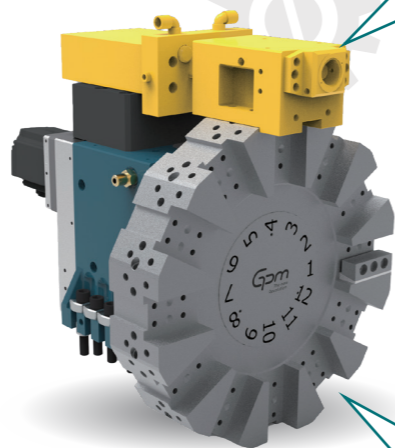
440.220/SW380 標準刀盤+外置型ATC

特色

- 搭配PSC介面，配合機械手臂可縮短裝/換刀時間
- 適用於裝有自動換刀庫
- 刀塔外置式機構油路做刀具放鬆、夾緊及吹氣
- 可選用標準規格刀盤搭配自動換刀刀座
- 可客製化設計以符合機床的獨特設計與應用

Features

- With the PSC interface and robotic integration, tool loading and changeover times are greatly reduced.
- Designed for machines with automatic tool changers.
- External hydraulic mechanism provides tool unclamp/clamp, and air-blow cleaning/air-sealing functions.
- Customizable to match specific machine designs and applications.



## 2026 展覽活動

Exhibition Activities

**TMTS**

Mar. 25~28 / 2026

臺中 臺灣 Taichung, Taiwan

攤位號 Booth# 4F

**G0642**



Apr. 21~25 / 2026

中國 上海 Shanghai, China

攤位號 Booth#

**E2-B303**

上海德霄 GP Int'l Co.,Ltd

**IMTS**

Sep. 14~19 / 2026

芝加哥 美國 Chicago, USA

攤位號 Booth# West Hall

**431381**



Sep. 15~19 / 2026

司徒加特 德國 Stuttgart, Germany

攤位號 Booth# Hall 6

**6E44**

**CMES 華机展**

Oct. 29~Nov. 21/2026

中國 東莞 Dongguan, China



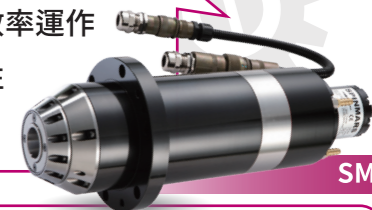
## 銑削&研磨主軸

Milling & Grinding spindle



特色

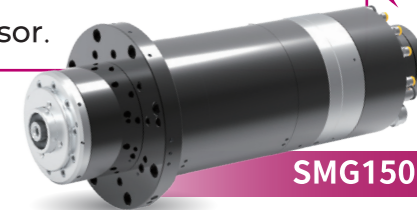
- 心軸經過深冷處理，熱變形量小，加工精度優良
- 內部冷卻系統採螺旋式循環，達高效率運作
- 採多顆排列歐洲軸承，實現卓越剛性
- 內建標配PT-100 溫度感測器



SM120

Features

- Thermal deformation is lower owing to cryogenically treated shaft. Machining accuracy is excellent.
- The internal cooling system adopts spiral circulation to achieve high-efficiency operation.
- Equipped with multiple arranged European bearings, achieving exceptional rigidity.
- Equipped with PT-100 temp sensor.



SMG150

TILT H PLUS

產品特色

- 可應用在鋁合金、木工、塑膠材料、複合材料加工
- 頭部的緊密設計，減小旋轉本體的體積
- 強力的制動扭矩和剛性設計
- C軸的旋轉角度±320°
- 定位精度 (1 arcmin)



Features

- Applicable in processing aluminum alloy, woodworking, plastic materials, and composite materials.
- The compact design of the head reduces the volume of the rotating body.
- Strong braking torque and rigid design.
- The rotation angle of the C-axis is ±320°
- Positioning precision (1 arc/min)

技術規格

Technical specifications

	A軸 A axis	C軸 C axis
連續最大扭矩 Max Continuous Torque	340Nm	450Nm
最大扭矩 Peak Torque	1030Nm	
軸最大旋轉角度 Max axis rotation	±120°	±320°
重量 (NW)	120Kg	



**HITECO**  
HIGH TECHNOLOGY COMPONENTS

# 智能升級 × Y軸刀塔

Upgrade x Turret with Y-axis

## 產品特色

高速長時運轉、降低熱變形：

- 專利散熱設計，低碳排放設計
- 動力刀轉速8000rpm (size16、20)
- 24小時連續運轉

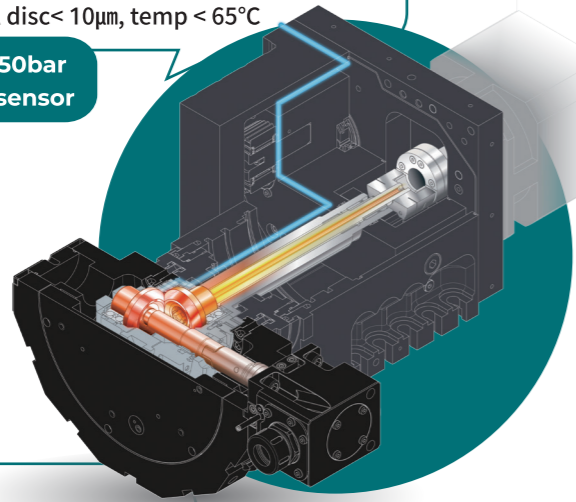
超高壓出水70~150bar  
內建PT100高精度溫度感測器

## Features

High speed, 24/7 Operation

- Patented design – Reducing thermal deformation
- Tool drive speed < 6000rpm : 24hr continuous operation allowed
- Tool drive speed at 8000rpm : continuous operation for 30mins; thermal displacement of tool disc < 10μm, temp < 65°C

High pressure coolant : 70~150bar  
PT-100 high precision temp sensor

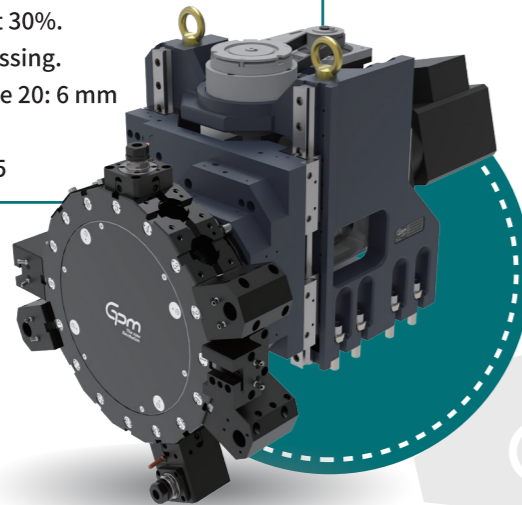


## 產品特色

- Y軸行程: ± 50 mm
- 滾柱線軌, 緊湊式設計節省30% 空間
- 應用面: 斜床身, 擺脫外掛式Y軸重量限制
- 單面切削加工實測數據:  
Size16: 4 mm、Size20: 6 mm
- 介面: BMT45、BMT55、BMT65

## Features

- Roller type linear guideway center mounted screw design.
- Interference is reduced by about 30%.
- Suitable for high-complex processing.
- Depth of cut: Size 16: 4 mm、Size 20: 6 mm
- Y-axis travel ±50mm
- Interface: BMT45, BMT55, BMT65

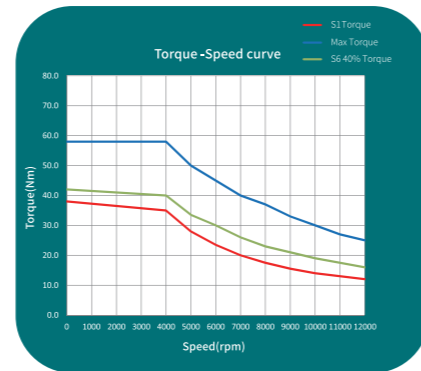


# 12,000轉內藏式刀塔

12,000 rpm DD Turret

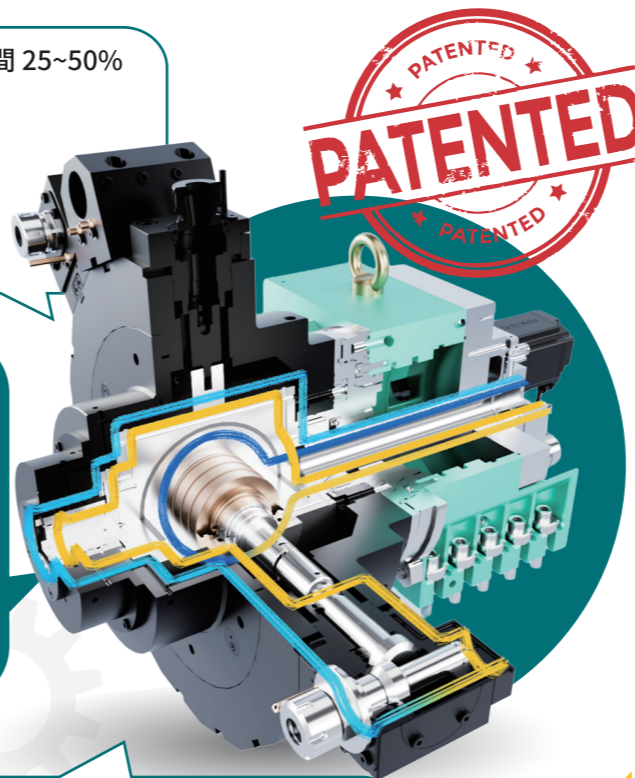
## 產品特色

- 內藏式馬達設計，節省安裝空間 25~50%
- 轉速高達 12,000 rpm
- 扭力高達 45 Nm (torque line)
- 特殊本體設計，可背向加工
- 特殊冷卻系統，可連續加工
- 極靜作業



## Features

- Built-in motor design, saves 25~50% installation space
- Speed up to 12,000 rpm
- Torque up to 45 Nm (torque line)
- Special housing design for back machining
- Special cooling design for continuous motion processing
- Quiet running



# 刀座 & 測試棒

Tool holder & Accessories



# B軸車銑頭

# TURN-MILL head

Motor spindle + B-axis DD table

搭載永磁馬達，體型小巧  
Equipped with permanent-magnet motor, compact design (HSK-T63 : L 450mm)

轉台煞車  
標配：72齒三片齒(5度一分割)  
Standard : 72 teeth coupling (5degree/split)



最高轉速/Max speed: 12,000 rpm  
最大扭力/Max torque: 120 Nm

Multiple tool system available  
(HSK T40/63/100,PSC C4/C6/C8)

三片齒在放鬆或夾緊狀態皆可換刀  
Independent channel for tool release unit and 3-piece coupling. This unique system supports tool changes under both clamp and unclamp status.

# PSC 2μm

# 重複定位精度

Repeating accuracy



(2 Axial + 10 Radial)

Turret specs	Tool holder specs as is → to
440.216/PCD270/8T	VDI30 → C4
440.220/PCD370/12T	VDI40 → C5
440.225/PCD420/12T	VDI50 → C6
440.232/PCD460/12T	VDI60 → C8

